



Your One Stop Sustainable Recycling Solution

What Happens to the Items Collected All Aboard Charity - 2023

Proud members of:



Charity Retail Association*
The voice of charity retail

Choice Textile Limited, 60 Coronation Road, London, NW10 7PX
0208 965 6699 www.choicetextile.com

Waste Carrier License: CBDU73882

Textile Waste in The UK

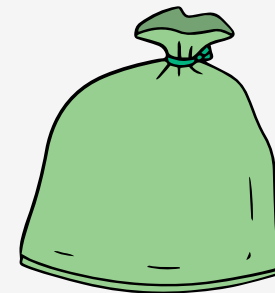


1 million tonnes of end of use textiles are generated every year in the UK. About 700,000 tonnes are collected for reuse and 'recycling' while the other 300,000 are sent to landfill, costing millions in landfill taxes. Textiles waste is a costly and growing problem in the UK with the volumes of low cost, new clothing increasing.

Today, more than 15 kilograms of textile waste is generated per person in Europe. The largest source of textile waste is discarded clothes and home textiles from consumers—accounting for around 85 percent of the total waste.



According to the Charity Retail Association, in 2018/19, a staggering 339,000 tonnes of textiles were kept out of landfill. This saved Local Authorities £27M in landfill tax and reduced CO2 emissions by around 6.9 million tonnes.

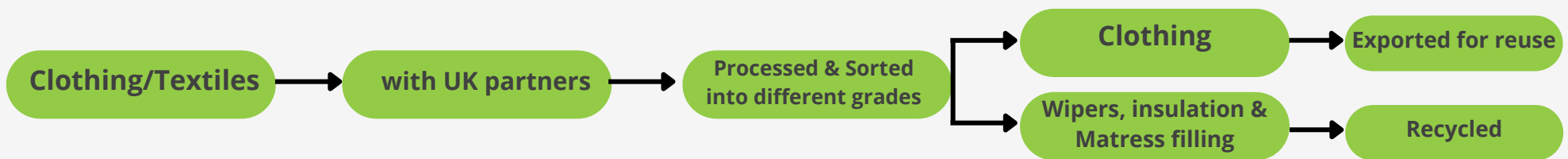
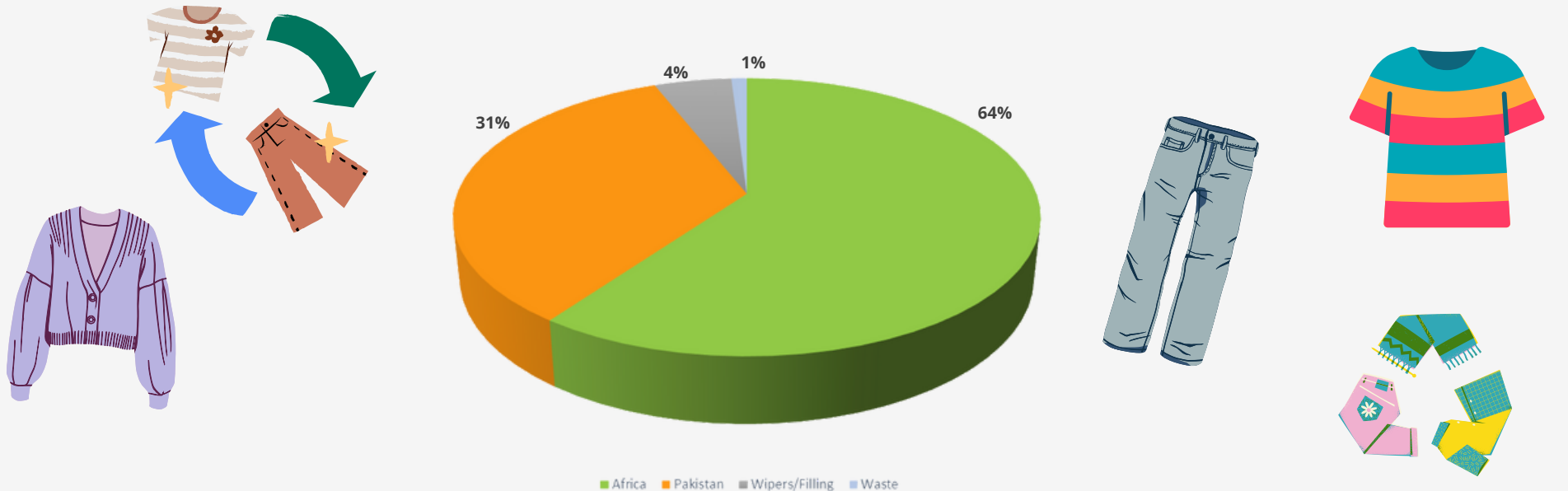


Clothing & Textiles

Most of the UK textile collectors ensure that unsellable donations are diligently and judiciously cleared from the backroom of charity shops.

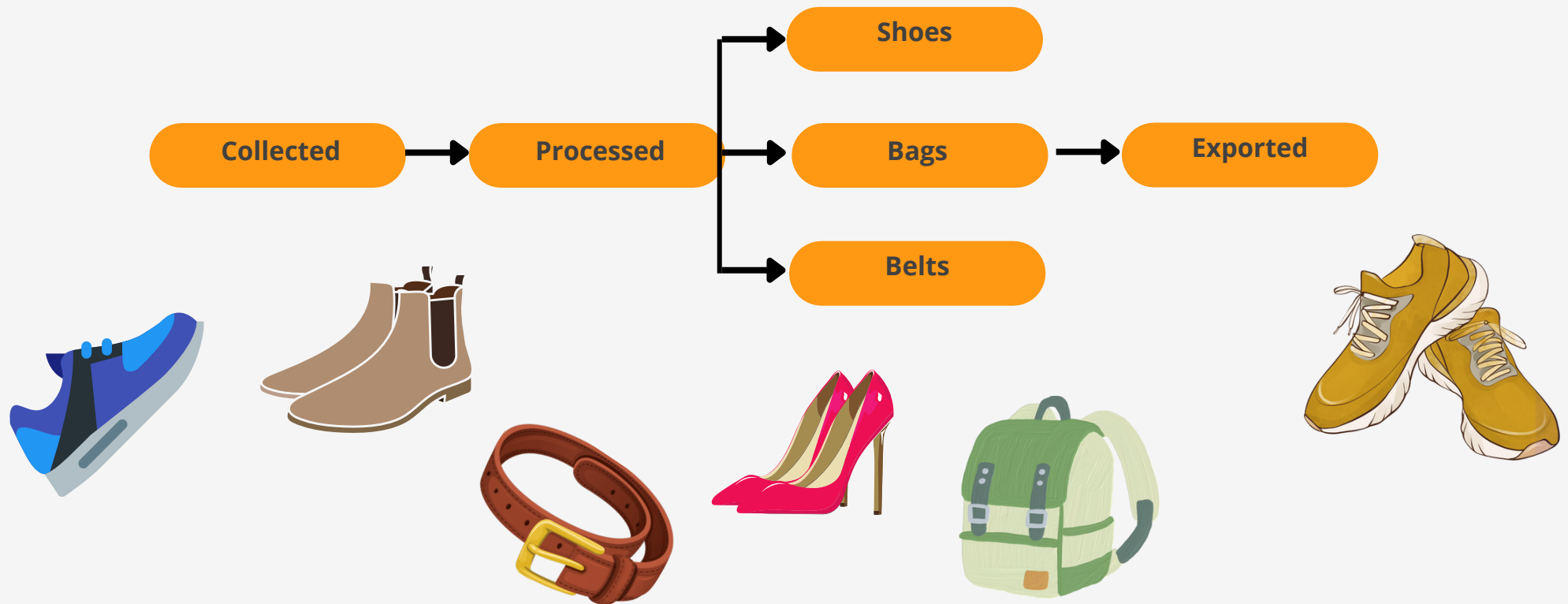
Through long standing business association, we work closely with UK partners that process the clothes into different grades for export to countries in Europe and West Africa.

96% is processed for reuse through export to developing countries: 65% to Europe/Africa & 31% to Pakistan. 3% which are not suitable for export are cut into cleaning wipers, while others are shredded to make flocking and felting materials for car insulations and mattress fillings, with approximately 1% waste.



Shoes, Bags and Belts

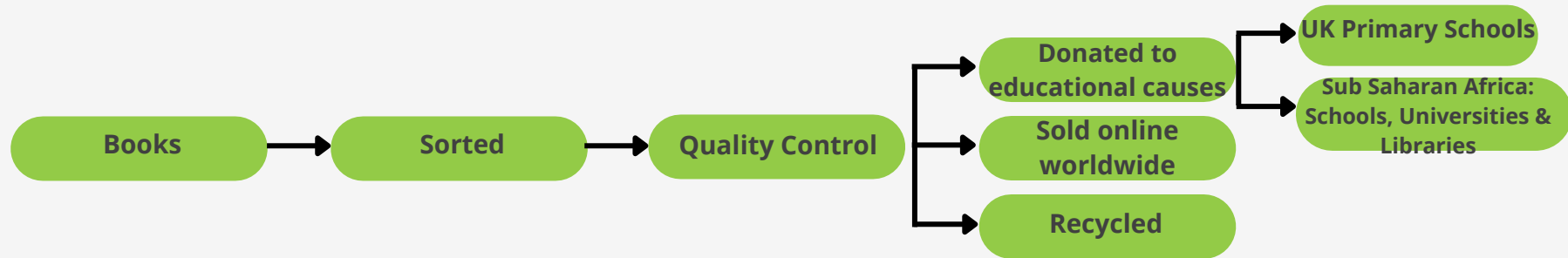
All shoes, bags and belts collected from charity shops are processed and repackaged. These items are redistributed for reuse to third party partners in West African countries such as Ghana, Togo and Ivory Coast.



Dr Shahin Rahimifar of Loughborough University stated that in the UK over 100 million pairs of shoes and/or footwear are sent to the landfill each year

Books, Paper and Cardboard

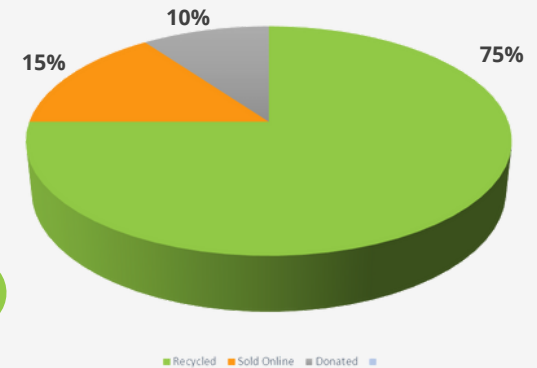
With our locations in London and Milton Keynes, millions of used books each month are processed for online sale using third-party marketplaces, finding new homes for some of these books worldwide.



Hundreds of thousands of good quality reading/literacy books are donated to Ihezie Foundation for distribution to UK primary schools, and over 900,000 textbooks have been donated to schools, colleges, universities and libraries in Sub-Saharan Africa. In this way our clients are with us on this journey to fulfill Corporate Social Responsibility, and give back to society.



15% processed for online warehousing, 10% donated to UK charity, Ihezie Foundation and finally 75% are recycled into new products such as paper, card, wrapping paper, packaging and boxes etc.

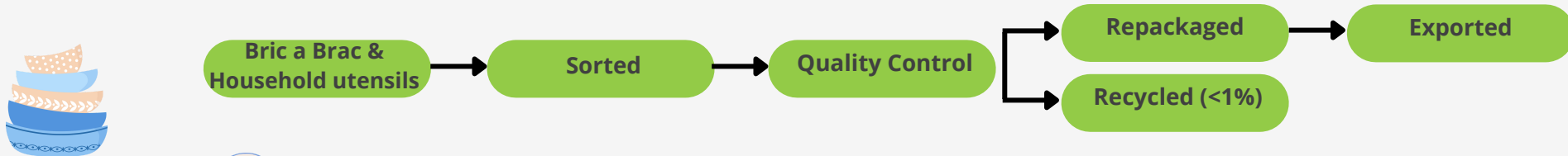


The unsellable items or books that cannot be reused are recycled through our partnership with papermill companies.

Residual paper-based waste such as cardboards, paper puzzles, board games, magazines and wrapping newspapers are recycled. A 0% waste operation and 100% circular economy.

Bric a Brac, Household Utensils, Soft Toys and Electrical items

These varied items are carefully processed and packaged for export to countries in the Middle East and South East Asia for reuse.



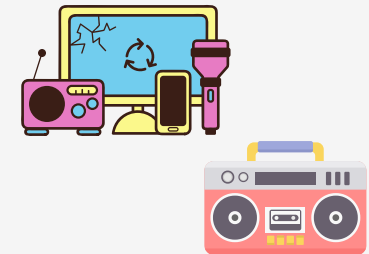
Our rigid sorting process ensures all fragile and breakable items are carefully wrapped to prevent damage on their journey across the world.



Less than 1% of waste is generated from broken or unusable items we collect from the shops. Through our working partnership with Biffa, the 1% waste is segregated and recycled. We are proud that 100% of our waste is recycled and diverted away from landfill.



Our Waste Carriers Licence and Exemptions allow us to collect, transport and store electronic recyclables and waste. We have partnered with WEEE licensed recyclers within the UK who responsibly process these items.



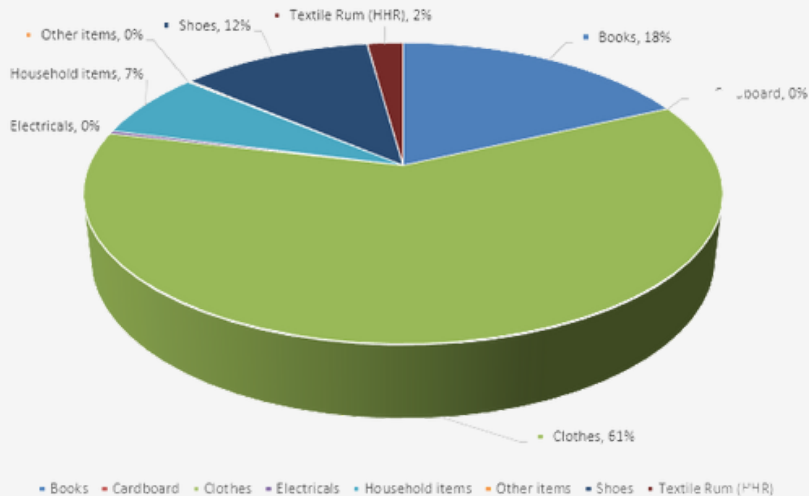
Final Destination for Recyclables Collected



All Aboard Charity - Annual Recyclables

The breakdown of recyclables collected for the period 01-Jan-2023 to 31-Dec-2023

- **Textiles** – 256,615kg - 94% was sent for reuse: 65% to Africa, 31% to Asia, 3% recycled and 1% waste.
- **Shoes** – 48,652kg - 100% was reused through exports to West Africa.
- **Books** –64,796kg - 15% processed for online warehousing, 10% donated to UK charity (Ihezic Foundation), 75% recycled into new products.
- **Household items** – 37,884kg - 99% was exported for reuse and <1% waste.
- **Electical Items** - 5,790kg- 100% sent for WEEE upcycling and recycling.



Recyclables collected by Choice from all All Aboard Charity locations, Jan 2023 to Dec 2023.

	Tonnes Saved	Carbon Saving (kg.CO _{2e} /tonne)
Glass / Ceramics	37.88	12,688.80
Books/Paper	64.80	74,265.44
Textiles	256.62	3,787,779.12

Estimated carbon savings made by All Aboard Charity through the working partnership with Choice. *Carbon WARM, normalized vs landfill (kg.CO_{2e}/tonne)